



Transcutaneous Monitoring in the Sleep Lab

Sensor & Monitor Handling



SENSOR
CLEANING &
INSPECTION

DO:

- ✓ Keep monitors turned on and connected to power between studies to keep the sensor calibrated and minimize gas consumption.
- ✓ If the monitor has been turned off, power on at least 4 hours prior to the study. This will allow for maximum sensor performance for the site time needed for an overnight study (8 hours recommended; 12 hours maximum).
- ✓ If the patient needs to get out of bed overnight, leave the sensor in the attachment ring and disconnect the cable from the monitor. Reconnect the sensor within 30 minutes to continue monitoring.
- ✓ Handle the sensor carefully by its neck, not the cable, to protect the membrane, sensor face, and cable junction.
- ✓ Clean the sensor gently with 70% isopropyl alcohol before returning the sensor to the docking station.
- ✓ Calibrate the sensor following the sleep study. A successful calibration is indicated by the "Ready for use" message.

DON'T:

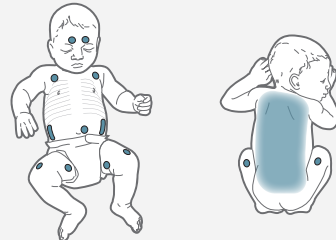
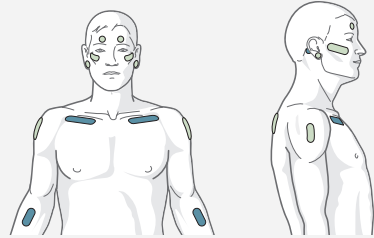
- ✗ Do not leave the sensor lying in the patient's bed or on the bedside table – always keep the sensor on the patient or in the Docking Station.
- ✗ Do not turn off the monitor after the study – keep the monitor on and connected to power so the monitor is ready for the next study.
- ✗ Do not scrub or scratch the sensor membrane or sensor face.
- ✗ Do not clean with unapproved cleaning agents.



APPROVED
CLEANING
AGENTS

Site Selection & Management

● = PCO₂ ● = PCO₂/SpO₂/PR



DO:

- ✓ Select a site with good perfusion, which is key for accurate transcutaneous readings.
- ✓ Avoid sites with edema, large superficial veins, or other skin anomalies. Remove hair if necessary.
- ✓ If monitoring SpO₂ and PR, be sure to select an appropriate measurement site over a flat, bony surface or with the ear clip.
- ✓ Utilize the Staysite Adhesive for extra adhesion during long monitoring times.

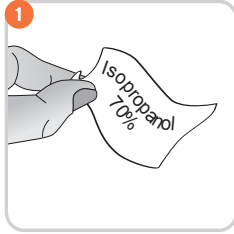
DON'T:

- ✗ Do not place any external pressure on the sensor (e.g., mask straps, headwraps, tight clothing).
- ✗ Do not tape over the sensor.

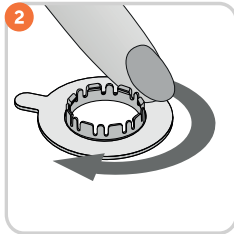
Sensor Application Using a Multi-Site Attachment Ring



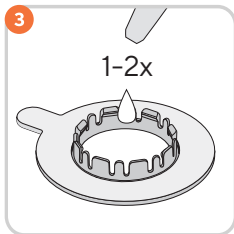
▶ WATCH VIDEO



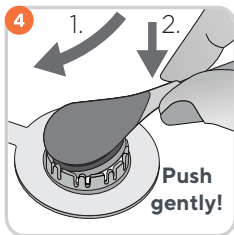
1 Clean the site and let it dry. If necessary, remove hair.



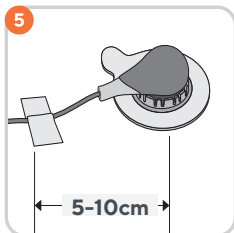
2 Attach the Multi-Site Attachment Ring (MAR/e) to the measurement site. Verify that the skin under the adhesive is not wrinkled.



3 Apply 1-2 drops of Sentec Contact Gel to the skin area in the center of the ring. Avoid wetting the adhesive tape!



4 Holding the sensor at its neck, approach the MAR/e and first insert the nose of the sensor into the ring. Click in the sensor by applying slight downward pressure on its neck. Rotate the sensor in the ring into the best position and press the sensor gently against the skin to spread the Contact Gel. Verify that air gaps between the skin and the sensor are eliminated and that the sensor can easily be rotated.



5 Tape the cable to the skin and secure it with a Clothing Clip on the patient's clothing or bed linen. For forehead/cheek placement, wrap the cable once around the ear first. Ensure that the sensor cable is loose enough for not to be stretched during monitoring. Gently press on the sensor as a final application check.

NOTE: If more secure sensor attachment is required, e.g. in high humidity environments, for patients who perspire profusely and/or in challenging patient motion conditions, the Staysite™ Adhesive (model SA-MAR) can be used complementary with the Multi-Site Attachment Rings.

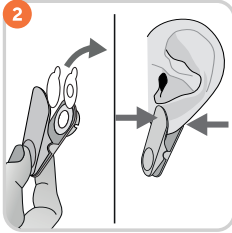


▶ WATCH VIDEO

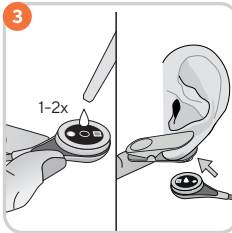
Sensor Application Using an Ear Clip



Clean the earlobe and let it dry. If necessary, remove hair.



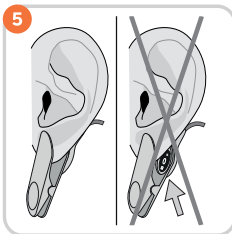
Remove the protective films on the ear clip and attach the clip to the earlobe with the retainer ring on the back or the earlobe. Ensure that the skin beneath the clip is not wrinkled and that the hole in the center of the ring completely covers the skin.



Take the sensor and apply 1-2 drops of Contact Gel on the middle of the sensor surface. Keep the sensor horizontal so the gel doesn't run off the sensor face. Pull the earlobe with the Ear Clip horizontally, then snap the sensor into the clip.



Squeeze the Ear Clip gently and rotate the sensor in the ring to distribute the contact gel. Verify that the entire sensor surface is covered by the earlobe.



Wrap the sensor cable around the ear once and tape it to the cheek. Secure the cable to the patient's clothing with the clothing clip. Ensure that the cable is loose enough not to be stretched during monitoring.

Institution-Specific Instructions

1 Monitors should be stored

- ON
- OFF

in Location _____


2 If you have any issues with the monitor, contact:

3 If you need help with connectivity or downloading the overnight report, contact:



**VISIT
PRODUCT
SUPPORT**

For product support, contact your local Sentec representative or visit our Transcutaneous Monitoring Product Support Page.



WARNING: Refer to the Instruction Manual for the SDMS, Technical Manual for the SDM, or the respective Directions for Use of the sensor and/or consumables for warnings, cautions, and additional information such as instructions, routine checks, or maintenance recommendations. These are available on [sentec.com/ifu](https://www.sentec.com/ifu).