



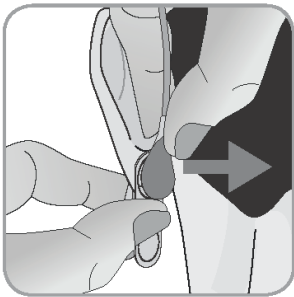
Sensor Removal with Ear Clip

Remove the sensor from the patient when monitoring is completed or monitoring time has elapsed (message 'Site time elapsed' or 'Calibrate sensor').

! CAUTION: For site inspection and/or calibration, the Ear Clip can remain on the same earlobe for up to 24 hours and may be reused for another sensor application. It is recommended to remove and to discard the Ear Clip after 24 hours and to keep the earlobe free of adhesive for 8 to 12 hours.

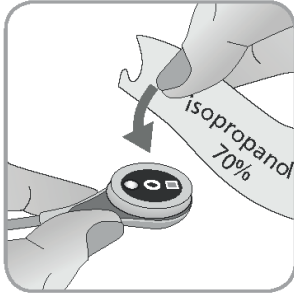
Sensor Removal for Subsequent Reattachment to Earlobe

1. Remove the adhesive tape securing the sensor cable.



2. Grab the sensor at its neck with one hand and detach it from the Ear Clip while holding the clip in place with the other hand.

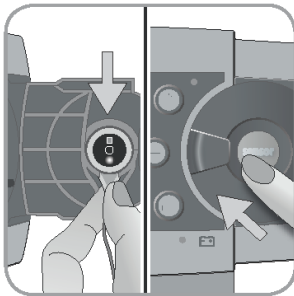




3. Clean the sensor with a swab wetted with 70% isopropanol to remove any contact liquid residues or dirt (for other approved cleaning agents refer to sentec.com/ifu).

4. Check the condition of the sensor membrane and the integrity of the sensor (p. 15). Change the membrane if necessary (p. 17). Do not use the sensor if any problems are noted.

Important: Before reapplying the sensor to the same earlobe, we recommend calibrating the sensor even if calibration is not yet mandatory or recommended by the SDM. If you skip the calibration, at least reset the Site Timer by pressing the Enter Button when the message 'Sensor off patient (←)' displays and then continue at step 6.



5. To calibrate the sensor, open the Docking Station Door and hang the sensor in the holder inside the Docking Station Door (the red light will appear). Close the Docking Station Door.

