



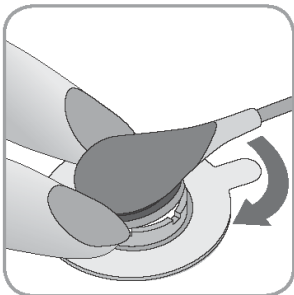
## Sensor Removal with Multi-Site Attachment Ring/Easy

Remove the sensor from the patient when monitoring is completed or monitoring time has elapsed (message 'Site time elapsed' or 'Calibrate sensor').

**! CAUTION:** For site inspection and/or calibration, the Multi-Site Attachment Ring/Easy can remain on the same site for up to 24 hours and may be reused for another sensor application. It is recommended to remove and to discard the Multi-Site Attachment Ring/Easy after 24 hours and to keep the measurement site free of adhesive for 8 to 12 hours.

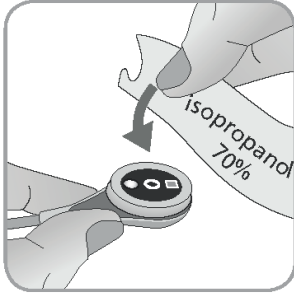
### Sensor Removal for Subsequent Reattachment to Same Site

**1.** Remove the adhesive tape securing the sensor cable.



**2.** Place a finger on each side of the ring and rotate the sensor towards the index finger. The index finger will act as a wedge and will disengage the sensor from the ring.

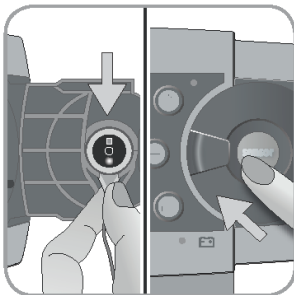




**3.** Clean the sensor with a swab wetted with 70% isopropanol to remove any contact liquid residues or dirt (for other approved cleaning agents refer to [sentec.com/ifu](http://sentec.com/ifu)).

**4.** Check the condition of the sensor membrane and the integrity of the sensor (p. 15). Change the membrane if necessary (p. 17). Do not use the sensor if any problems are noted.

**Important:** Before reapplying the sensor to the same site, we recommend calibrating the sensor even if calibration is not yet mandatory or recommended by the SDM. If you skip the calibration, at least reset the Site Timer by pressing the Enter Button when the message 'Sensor off patient (←)' displays and then continue at step 6.



**5.** To calibrate the sensor, open the Docking Station Door and hang the sensor in the holder inside the Docking Station Door (the red light will appear). Close the Docking Station Door.





**Note:** Sensor calibration – if necessary – will start (message ‘Calibration in progress’). The message ‘Ready for use’ will display once calibration is finished.

**6.** Clean the skin in the center of the ring with a dry swab or, if necessary, a swab wetted with 70% isopropanol (or according to your institution’s skin cleaning/degreasing procedures) to remove any contact liquid residues or dirt and let it dry.

**7.** Carefully inspect the measurement site.

**! CAUTION:** Do not reattach the sensor to the same site if any skin irritations are noted during site inspection.

**8.** To reapply the sensor to the same site, continue at step 5 in section ‘Sensor Application using a Multi-Site Attachment Ring/Easy’ (p. 26). Make sure to reapply **one small** drop of contact liquid to the site before reinserting the sensor into the MAR/e.





## Sensor Removal without Reattachment to Same Site

1. Remove the sensor together with the Multi-Site Attachment Ring/Easy by carefully lifting the ring's little tab
2. Clean the skin with a dry swab or, if necessary, a swab with 70% isopropanol (or according to your institution's skin cleaning/degreasing procedures) to remove any contact liquid residues or dirt and then carefully inspect the site to note any potential skin irritations.
3. Remove the sensor from the MAR/e, discard the ring and then follow steps 3 to 5 above to clean the sensor, to check the condition of its membrane and its integrity as well as to insert it in the Docking Station for calibration and/or storage.

**! CAUTION:** To maintain monitor readiness and minimize  $\text{PCO}_2$  drift potential, always keep the SDM switched on and store the sensor in the Docking Station in between monitoring.

