



Sensor Application Using a Multi-Site Attachment Ring/Easy



According to the procedure described point by point below, a Multi-Site Attachment Ring (MAR) or Multi-Site Attachment Ring Easy (MARE) is first attached to the measurement site, **one small** drop of contact liquid is then applied to the center of the sensor and finally the sensor is snapped into the ring. Alternatively, you may also click the sensor into the ring first, remove the protective liner of the adhesive tape, and then apply **one small** drop of contact liquid on the center of the sensor. In this case ensure to keep the sensor/ring assembly such that the contact liquid does not run off the sensor face and flip-over the sensor/ring assembly just before attaching it to the skin.



WARNING: Application of any pressure to the measurement site (e.g. by using a pressure bandage) may cause pressure ischemia at the measurement site and, consequently, inaccurate measurements, necrosis or – in combination with heated sensors – burns.

1. Check current SDM Settings/SDM Profile and verify system readiness (message 'Ready for use', p. 23). Change SDM Settings/SDM Profile if necessary.
2. Clean the site with a swab wetted with 70% isopropanol (or according to your institution's skin cleaning/degreasing procedures) and let it dry. If necessary, remove hair.

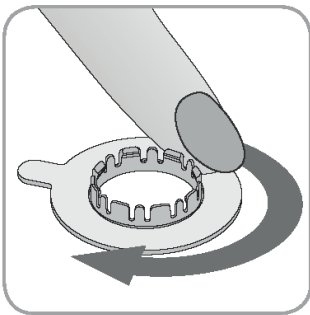




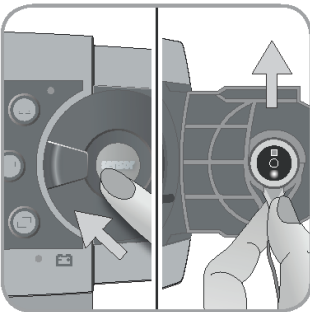
3. Take a Multi-Site Attachment Ring/Easy out of the package and pull off the liner protecting the adhesive tape of the ring.



! CAUTION: The Multi-Site Attachment Rings (models MAR-MI, MAR-SF, MARE-MI and MARE-SF) are for single-use. Neither reattach used rings on the same nor on another patient!



4. Attach the ring to the measurement site. Verify that the skin under the adhesive is not wrinkled. Then press gently on the retainer ring and move your finger around the ring circumference to ensure a good adhesion of the ring's adhesive to the skin.



5. Open the Docking Station Door and remove the sensor.

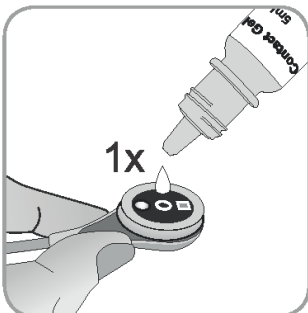
Note: Always grab the sensor at its neck to avoid pulling and tearing the sensor cable.

6. Close the Docking Station Door.



7. Check the condition of the sensor membrane and the integrity of the sensor (p. 15). Change the membrane if necessary (p. 17). Do not use the sensor if any problems are noted.






8. Apply **one small** drop of contact liquid to the center of the sensor surface. Ensure to keep the sensor horizontal (membrane pointing upwards) so that the contact liquid does not run off the membrane. Flip over the sensor just before inserting it into the ring.

Note: As contact liquid, SenTec recommends using SenTec's Contact Gel.

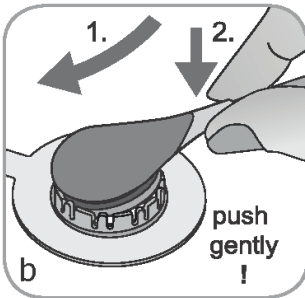
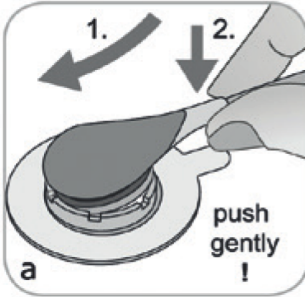
Note: Alternatively, you can apply one small drop of contact liquid to the skin area in the center of the attachment ring.

Note: Avoid wetting the adhesive tape!

Note: As long the sensor is not yet applied to the patient, try to keep the measurement site as horizontal as possible so that the contact liquid does not run off the measurement site.

 **WARNING:** Do not swallow Contact Gel. Keep away from children. Avoid contact with eyes and injured skin. Do not use on patients who exhibit allergic reactions. Use only approved SenTec Contact Gel.





9. Holding the sensor at its neck, approach the MAR from the flap side (a) or the MARE from any side (b) and first insert the nose of the sensor into the retainer ring. Then apply slight downward pressure on its neck. The spring tension of the retainer ring will pull the sensor into place with little to no pressure on the skin. Rotate the sensor in the ring and press the sensor gently against the skin to spread the contact liquid.

Note: Check that the sensor can be easily rotated to ensure it is snapped in correctly.

10. Check sensor application! Ensure that air gaps are eliminated between the skin and the sensor.

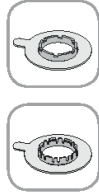
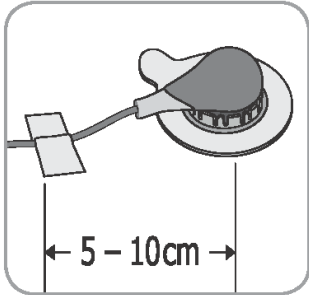
Note: A good, hermetically sealed contact between the sensor and the skin is essential for TC monitoring!



WARNING: Ensure the sensor is applied correctly. Incorrect application of the sensor can cause incorrect measurements.

11. Twist the sensor into the best position. For forehead/cheek placement wrap the sensor cable once around the ear and tape the cable to the cheek or another applicable site. For other application sites, tape the cable to the skin at a distance of 5 to 10 cm from the sensor head. Route the sensor cable





properly to avoid entanglement or strangulation and secure it with a Clothing Clip to an appropriate site of the patient's clothing or bed linen. Ensure that the sensor cable is loose enough for not to be stretched during monitoring. Gently press

on the sensor as a final application check.

12. Verify that the SDM detects that the sensor was placed on the patient, initiates monitoring and that the enabled parameters stabilize. If necessary, readjust sensor application or reposition the sensor.

Note: Typically, PCO_2 increases and PO_2 (if enabled) decreases to reach a stabilized value within 2 to 10 minutes (p. 31). SpO_2 and PR usually stabilize within a few seconds.

Note: If more secure sensor attachment is required, e.g. in high humidity environments, for patients who perspire profusely and/or in challenging patient motion conditions, the Staysite™ Adhesive (model SA-MAR) can complementary be used in addition to the Multi-Site Attachment Rings. Please refer to the Directions for Use for the Staysite™ Adhesive.

